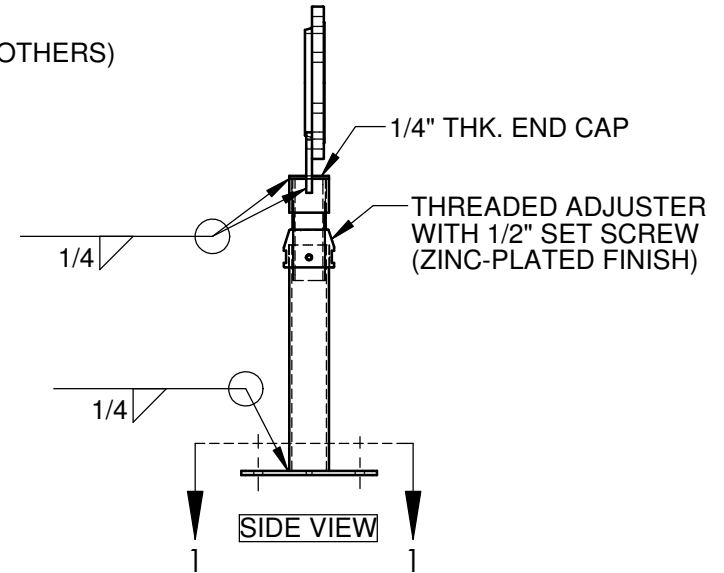
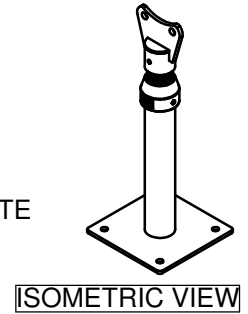
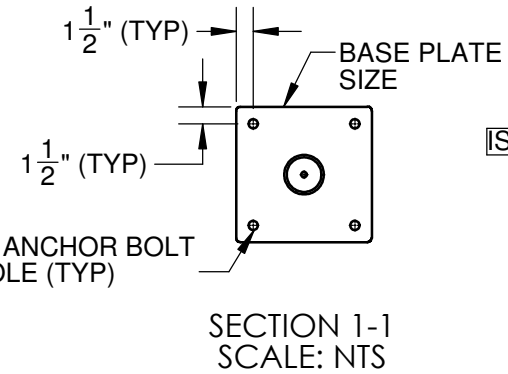
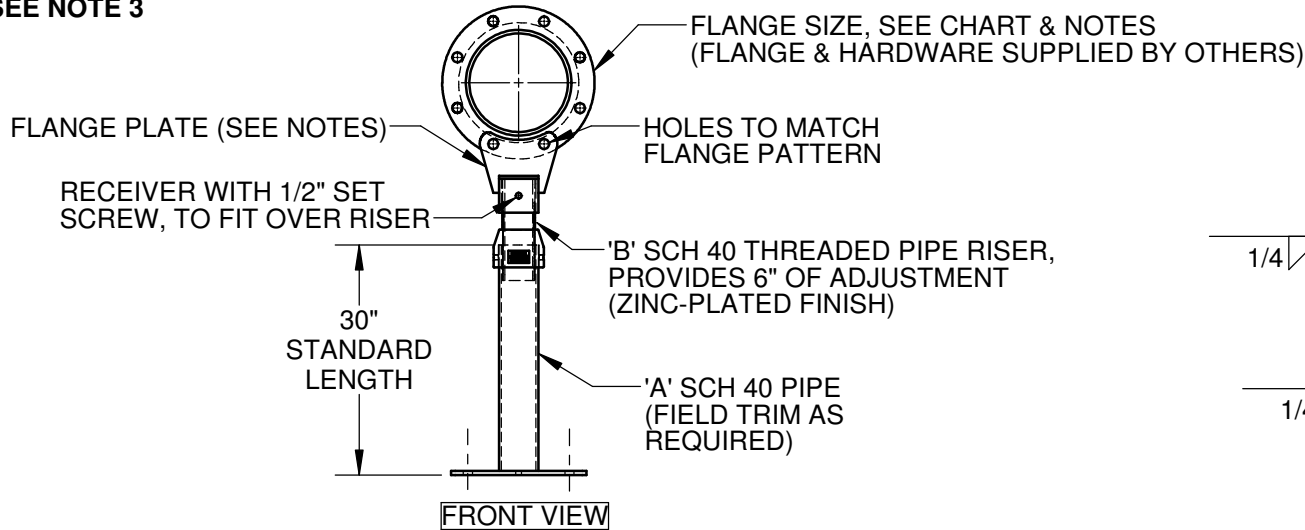


PART NO.	FLANGE SIZE	'A'	'B'	'C'	BASE PLATE SIZE
PS-250-025F-30-***	2 1/2"	2 1/2"	1 1/2"	Ø9/16"	3/8" x 8 1/2" SQ.
PS-250-03F-30-***	3"	2 1/2"	1 1/2"	Ø9/16"	3/8" x 8 1/2" SQ.
PS-250-035F-30-***	3 1/2"	2 1/2"	1 1/2"	Ø9/16"	3/8" x 8 1/2" SQ.
PS-300-04F-30-***	4"	3"	2 1/2"	Ø13/16"	3/8" x 12" SQ.
PS-300-05F-30-***	5"	3"	2 1/2"	Ø13/16"	3/8" x 12" SQ.
PS-300-06F-30-***	6"	3"	2 1/2"	Ø13/16"	3/8" x 12" SQ.
PS-300-08F-30-***	8"	3"	2 1/2"	Ø13/16"	3/8" x 12" SQ.
PS-300-10F-30-***	10"	3"	2 1/2"	Ø13/16"	3/8" x 12" SQ.
PS-300-12F-30-***	12"	3"	2 1/2"	Ø13/16"	3/8" x 12" SQ.
PS-400-14F-30-***	14"	4"	3"	Ø15/16"	1/2" x 13 1/2" SQ.
PS-400-16F-30-***	16"	4"	3"	Ø15/16"	1/2" x 13 1/2" SQ.
PS-600-18F-30-***	18"	6"	4"	Ø1 1/8"	1/2" x 18" SQ.
PS-600-20F-30-***	20"	6"	4"	Ø1 1/8"	1/2" x 18" SQ.
PS-600-22F-30-***	22"	6"	4"	Ø1 1/8"	1/2" x 18" SQ.
PS-600-24F-30-***	24"	6"	4"	Ø1 1/8"	1/2" x 18" SQ.
PS-600-26F-30-***	26"	6"	4"	Ø1 1/8"	1/2" x 18" SQ.
PS-600-30F-30-***	30"	6"	4"	Ø1 1/8"	1/2" x 18" SQ.
PS-600-32F-30-***	32"	6"	4"	Ø1 1/8"	1/2" x 18" SQ.
PS-600-36F-30-***	36"	6"	4"	Ø1 1/8"	1/2" x 18" SQ.

***SEE NOTE 3



- NOTES:**
1. TOPS AND BASES ARE HOT-DIPPED GALVANIZED IN ACCORDANCE WITH ASTM A123 AFTER FABRICATION, ADJUSTER AND RISER ARE ZINC-PLATED.
 2. TYPE 316 STAINLESS STEEL SUPPORTS AVAILABLE.
 3. ***EQUALS "HDG" TO SPECIFY GALVANIZED FINISH OR "316" TO SPECIFY TYPE 316 STAINLESS STEEL MATERIAL.
 4. STANDARD FLANGE PLATE TO FIT CLASS 150 FLANGES, DIFFERENT CLASSES AVAILABLE UPON REQUEST.
 5. ANCHOR BOLTS SHALL BE SUPPLIED BY OTHERS.

APPROVED BY: _____ **DATE:** _____
CONTRACTOR TO VERIFY DIMENSIONS PRIOR TO FABRICATION

PROPRIETARY AND CONFIDENTIAL THE INFORMATION CONTAINED IN THIS DRAWING IS THE SOLE PROPERTY OF PIPELINE PRODUCTS. ANY REPRODUCTION IN PART OR AS A WHOLE WITHOUT THE WRITTEN PERMISSION OF PIPELINE PRODUCTS IS PROHIBITED.		UNLESS OTHERWISE SPECIFIED: DIMENSIONS ARE IN INCHES THRU HOLES: ±1/16" TOLERANCES: ±.125 FRACTIONAL: ±1/8" ANGULAR: MACH±2° BEND ±2° DO NOT SCALE DRAWING	REV:	DATE:	COMMENTS:	TITLE: FLANGE TOP ADJUSTABLE PIPE SUPPORT	PART NO: SEE CHART	DATE:	
						QUOTE:	PO#:	REFERENCE:	
						PROJECT:		DRAWN: MENERA	WEIGHT: N/A
						FOR:		QTY:	SCALE: NTS