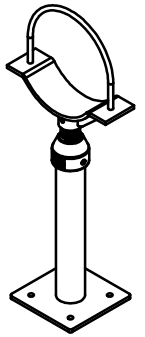
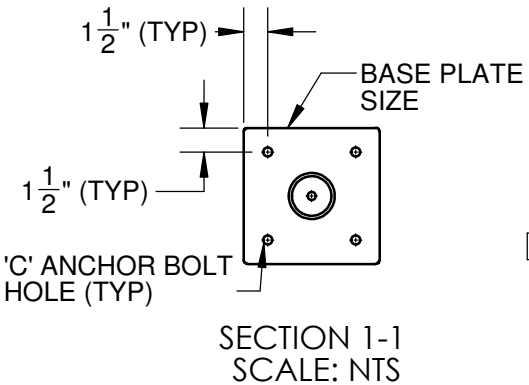
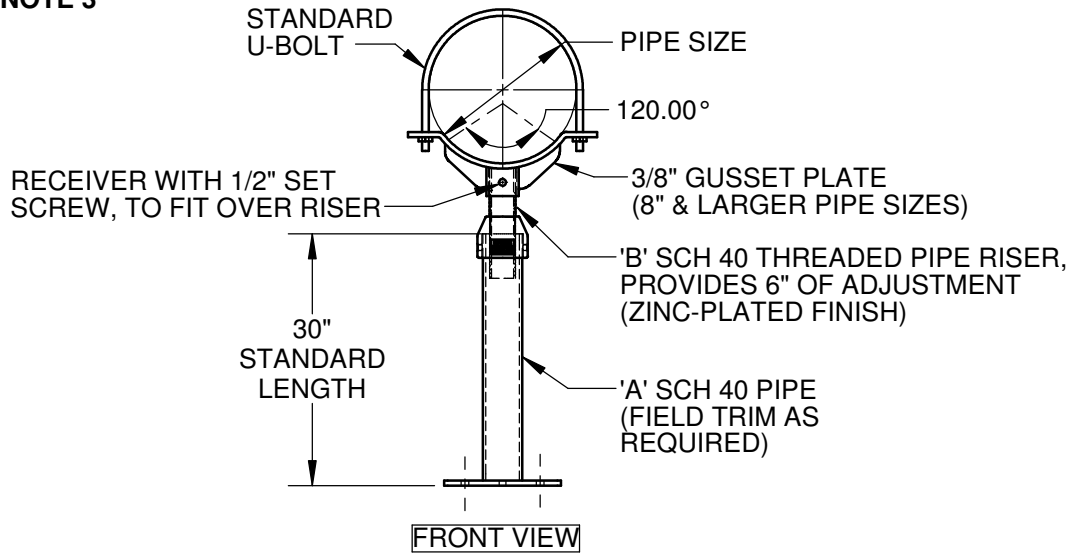
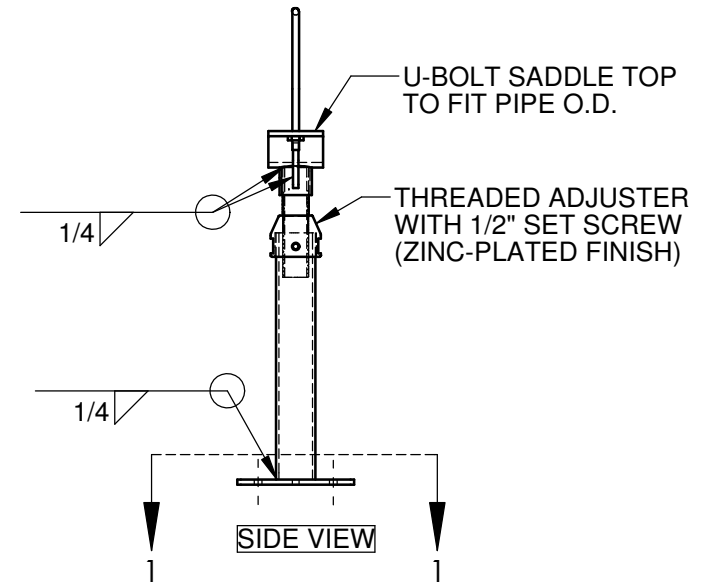


PART NO.	PIPE SIZE	'A'	'B'	'C'	U-BOLT DIA.	BASE PLATE SIZE
PS-250-025U-30-***	2 1/2"	2 1/2"	1 1/2"	Ø9/16"	Ø3/8"	3/8" x 8 1/2" SQ.
PS-250-03U-30-***	3"	2 1/2"	1 1/2"	Ø9/16"	Ø1/2"	3/8" x 8 1/2" SQ.
PS-250-035U-30-***	3 1/2"	2 1/2"	1 1/2"	Ø9/16"	Ø1/2"	3/8" x 8 1/2" SQ.
PS-300-04U-30-***	4"	3"	2 1/2"	Ø13/16"	Ø1/2"	3/8" x 12" SQ.
PS-300-05U-30-***	5"	3"	2 1/2"	Ø13/16"	Ø1/2"	3/8" x 12" SQ.
PS-300-06U-30-***	6"	3"	2 1/2"	Ø13/16"	Ø5/8"	3/8" x 12" SQ.
PS-300-08U-30-***	8"	3"	2 1/2"	Ø13/16"	Ø5/8"	3/8" x 12" SQ.
PS-300-10U-30-***	10"	3"	2 1/2"	Ø13/16"	Ø3/4"	3/8" x 12" SQ.
PS-300-12U-30-***	12"	3"	2 1/2"	Ø13/16"	Ø7/8"	3/8" x 12" SQ.
PS-400-14U-30-***	14"	4"	3"	Ø15/16"	Ø7/8"	1/2" x 13 1/2" SQ.
PS-400-16U-30-***	16"	4"	3"	Ø15/16"	Ø7/8"	1/2" x 13 1/2" SQ.
PS-600-18U-30-***	18"	6"	4"	Ø1 1/8"	Ø1"	1/2" x 18" SQ.
PS-600-20U-30-***	20"	6"	4"	Ø1 1/8"	Ø1"	1/2" x 18" SQ.
PS-600-22U-30-***	22"	6"	4"	Ø1 1/8"	Ø1"	1/2" x 18" SQ.
PS-600-24U-30-***	24"	6"	4"	Ø1 1/8"	Ø1"	1/2" x 18" SQ.
PS-600-26U-30-***	26"	6"	4"	Ø1 1/8"	Ø1"	1/2" x 18" SQ.
PS-600-30U-30-***	30"	6"	4"	Ø1 1/8"	Ø1"	1/2" x 18" SQ.
PS-600-32U-30-***	32"	6"	4"	Ø1 1/8"	Ø1"	1/2" x 18" SQ.
PS-600-36U-30-***	36"	6"	4"	Ø1 1/8"	Ø1"	1/2" x 18" SQ.

***SEE NOTE 3



ISOMETRIC VIEW



NOTES:

1. TOPS AND BASES ARE HOT-DIPPED GALVANIZED IN ACCORDANCE WITH ASTM A123 AFTER FABRICATION, ADJUSTER AND RISER ARE ZINC-PLATED.
2. TYPE 316 STAINLESS STEEL SUPPORTS AVAILABLE.
3. ***EQUALS "HDG" TO SPECIFY GALVANIZED FINISH OR "316" TO SPECIFY TYPE 316 STAINLESS STEEL MATERIAL.
4. ANCHOR BOLTS SHALL BE SUPPLIED BY OTHERS.

APPROVED BY: _____ **DATE:** _____
CONTRACTOR TO VERIFY DIMENSIONS PRIOR TO FABRICATION

PROPRIETARY AND CONFIDENTIAL THE INFORMATION CONTAINED IN THIS DRAWING IS THE SOLE PROPERTY OF PIPELINE PRODUCTS. ANY REPRODUCTION IN PART OR AS A WHOLE WITHOUT THE WRITTEN PERMISSION OF PIPELINE PRODUCTS IS PROHIBITED.		UNLESS OTHERWISE SPECIFIED: DIMENSIONS ARE IN INCHES THRU HOLES: ±1/16" TOLERANCES: ±.125 FRACTIONAL: ±1/8" ANGULAR: MACH±2° BEND ±2° DO NOT SCALE DRAWING	REV:	DATE:	COMMENTS:	TITLE: U-BOLT TOP ADJUSTABLE PIPE SUPPORT	PART NO: SEE CHART	DATE:	
						QUOTE:	PO#:	REFERENCE:	
						PROJECT:		DRAWN: MENERA	WEIGHT: N/A
						FOR:		QTY:	SCALE: NTS