



Water Sampling Station

PART NUMBER
WTS-858

Features: 180° flip top access lid with stainless steel hinge.

Alignment lock latch for district padlock.

Included u-bolt for mounting pipe and valve riser.

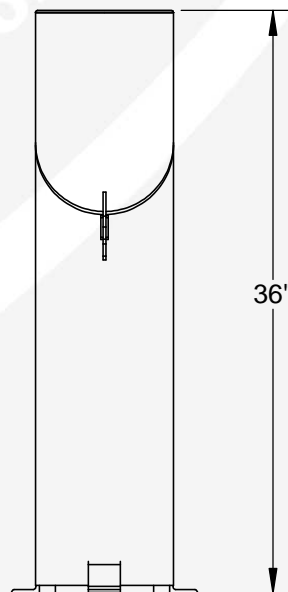
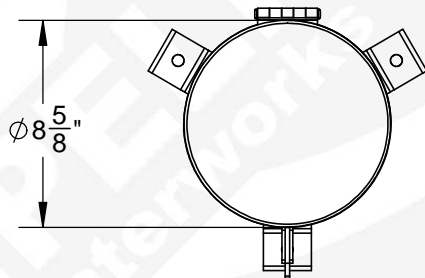
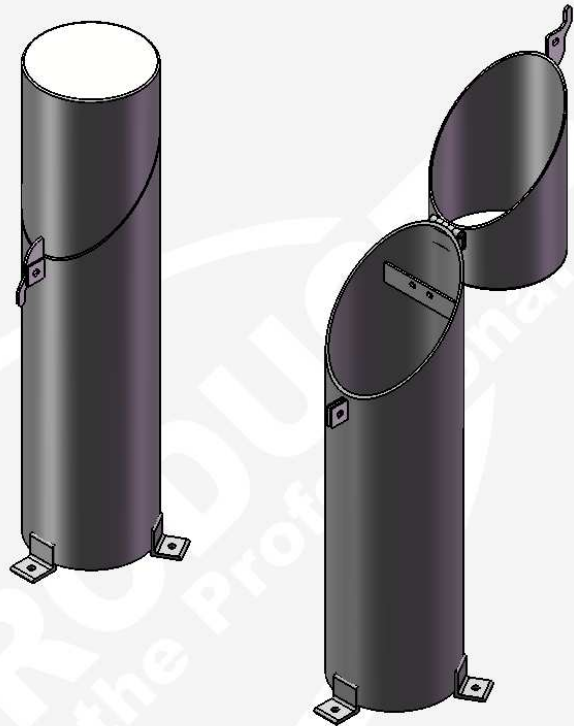
3ea. mounting legs.

Size: 8.625" in diameter and 36" tall.

Material: Mild steel.

Finish: Available finishes include:

- Hot Dip Galvanized
- Zinc rich Primer
- Powder coating in your color of choice



DIMENSIONS ARE IN INCHES | DO NOT SCALE DRAWING | DRW: OSBORNE | REV. B