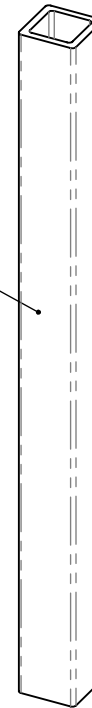
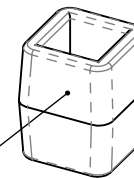


FPT-200
FIBERPLAS TUBING
AVAILABLE IN
LEGNTHS UP TO
20 FEET



FPL-220
LOWER OP NUT



PROPRIETARY AND CONFIDENTIAL
THE INFORMATION CONTAINED IN THIS
DRAWING IS THE SOLE PROPERTY OF
PIPELINE PRODUCTS. ANY REPRODUCTION
IN PART OR AS A WHOLE WITHOUT THE
WRITTEN PERMISSION OF PIPELINE PRODUCTS
IS PROHIBITED.



UNLESS OTHERWISE SPECIFIED:
DIMENSIONS ARE IN INCHES
THRU HOLES: $\pm 1/16$ "
TOLERANCES: $\pm .125$
FRACTIONAL: $\pm 1/8$ "
ANGULAR: MACH $\pm 2^\circ$ BEND $\pm 2^\circ$
DO NOT SCALE DRAWING

REV:	DATE:	COMMENTS:	TITLE: FIBERPLAS VALVE STEM EXT.	PART NO: FPL-200-220	DATE: 6/16/2017
			QUOTE:	PO#:	REF:
			PROJECT:	DRAWN BY:	WEIGHT: N/A
			FOR:	MAT:	QTY:
					SCALE: NTS SHEET 1 OF 2

Features: Allows easy field assembly of stem extensions.

Weighs a fraction of steel extensions.

Upper locating ring can be easily modified to fit 4.5", 6" & 8" valve can risers.

Tested at 750 ft.-lbs torque.

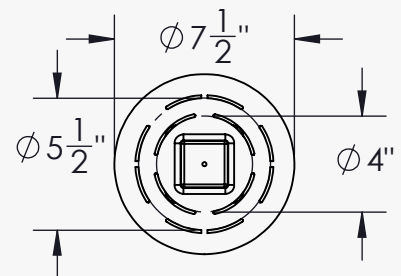
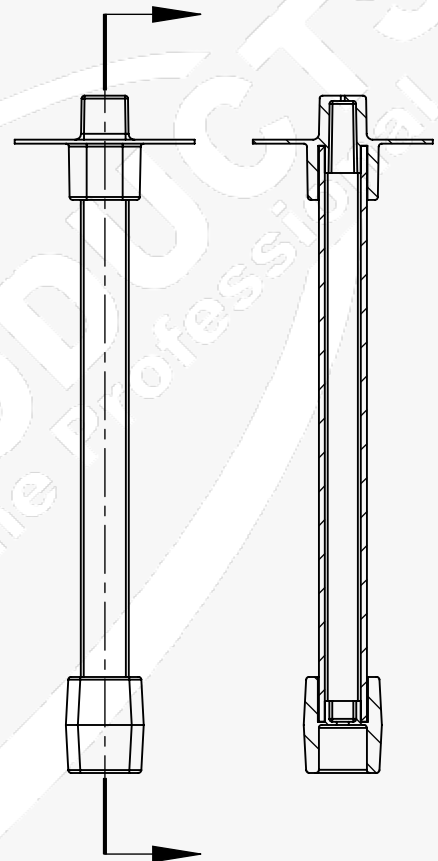
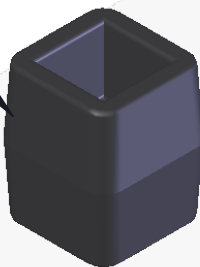
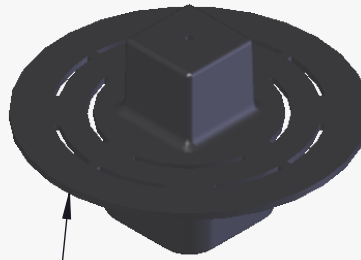
Recommended for extensions up to 10 feet long.

Material: Upper and lower operating nuts are fiberglass reinforced nylon. Tubing is fiberglass reinforced thermoset polyester resin.

FPU-210
UPPER OP NUT

FPT-200
FIBERPLAS TUBING

FPL-220
LOWER OP NUT



DIMENSIONS ARE IN INCHES | DO NOT SCALE DRAWING | DRW: OSBORNE | REV. B